

# RTV ACCESSORIES & ATTACHMENTS

RTV520, Sidekick & RTV-X Series



# WE ARE KUBOTA.

**TOGETHER WE DO MORE**

Founded from decades of quality, precision, and innovation.  
Because trust is earned, not given.



## #1 GLOBAL LEADER IN COMPACT EXCAVATORS

OEM Off-Highway Researched, 2016



## #1 DIESEL ENGINE MANUFACTURER

Largest builder of Under 100 hp Multi-Cylinder,  
Non-Automotive Diesel Engines



## #1 SUB-COMPACT TRACTOR

AEM/EDA Industry Data May 2016



## #1 DIESEL UTILITY VEHICLE

Kubota is the best-selling diesel utility vehicle manufacturer in North America since 2004\*. And with 1,102 lb cargo capacity and 1,300 lb towing capacity, the RTV-X Series has the power and dependable performance to handle whatever job you may throw at it. Plus, we've developed an advanced experience in drivability and ergonomics, so your ride will be comfortable and smooth even in the roughest work environments.

\*Power Products marketing. North American Utility Vehicle Markets Report May 2016

**DON'T SETTLE FOR LESS**

— KEEP IT —

# KUBOTA



# TABLE OF CONTENTS

## KUBOTA RTV LINEUP

### RTV520

#### Mid-size Utility Vehicles



RTV520

Cab Components .....	4
Winches / Guard / Hitch .....	8
Cab Accessories .....	9
Storage / Snow Removal .....	10
Tires & Wheels .....	11
Lights .....	12

### SIDEKICK

#### Full-size Utility Vehicles



SIDEKICK

Cab Components .....	14
Lights .....	16
Cab Accessories .....	18
Winches / Bed Lift .....	20
Guards .....	22
Cargo / Storage .....	23
Snow Removal .....	24
Tires & Wheels .....	25
RTV Packages .....	26
Maintenance .....	28

### RTV-X SERIES

#### Full-size Utility Vehicles



RTV-X



RTV-X1130



RTV-X1100C



RTV-X1140

Cab Components .....	30
Winches / Bed Lift / Hitch .....	34
Guards .....	35
Cargo / Storage .....	36
Cargo Assessories .....	37
Cab Assessories .....	38
Lights / Harnesses / Engine .....	40
Snow Removal .....	42
K-Connect Implements .....	44
Sprayers .....	47
Spreaders .....	48
Tires & Wheels .....	50
Miscellaneous Accessories .....	51

## RTV520



### **A**

## Poly Cab Enclosure

77700-11821  
RTV520

Poly cab enclosure bundled all together to keep the operator and passenger out of the elements

#### Includes:

- Hard Cab Component Mounting Kit (77700-V4310A)
- Poly Windshield (77700-V4368)
- Plastic Canopy (77700-V4312)
- Acrylic Rear Panel (77700-11822)
- Plastic Door Kit (77700-11823)

### **Poly Cab Component Mounting Kit**

77700-V4310A (V4310A)  
RTV520

- Slotted design mounting kit for quicker installation
- Included with Hard Cab Enclosure (77700-11821)
- Only one mounting kit required to install the Hard Cab Enclosure (77700-11821) components in any combination



The following 4 Cab Components are available as part of the 77700-11821, and can also be purchased individually.

**B**  
**Poly Windshield**  
77700-V4368 (V4368)  
RTV520

- Steel framed hard coated poly windshield featuring 30X more scratch resistance than the typical acrylic windshields
- Superior scratch resistance for longer lasting glare-free optics
- Recommend adding Wiper Kit (77700-V4367)
- Requires Hard Cab Component Mounting Kit (77700-V4310A)



**C**  
**Plastic Canopy**  
77700-V4312 (V4312)  
RTV520

- Steel reinforced plastic canopy to keep the operator and passenger out of the elements
- Requires Hard Cab Component Mounting Kit (77700-V4310A)



**D**  
**Acrylic Rear Panel**  
77700-11822  
RTV520

- Steel framed acrylic rear panel to prevent wind, dust, and rain from entering into the operator's area
- Requires Hard Cab Component Mounting Kit (77700-V4310A)

**E**  
**Plastic Door Kit**  
77700-11823  
RTV520

- Steel reinforced black plastic doors and sliding acrylic side windows
- Requires Hard Cab Component Mounting Kit (77700-V4310A)



**Wiper Kit**  
77700-V4367 (V4367)  
RTV520

- Keep mud, rain, dust, and everyday grime off the front windshield
- Compatible with Poly Windshield (77700-V4368) and (77700-V4365), and Hard Cab Enclosure (77700-11821),
- Not compatible with Upper Glass Windshield (K7311-99280)



**Front Heavy Load Strut**  
K7311-99180  
RTV520

- Optional for Cab and V4308B Front Blade. Not required.

## Poly Windshield

77700-V4365 (V4365)

RTV520

- Steel framed hard coated poly windshield featuring 30X more scratch resistance than the typical acrylic windshields
- Superior scratch resistance for longer lasting glare-free optics
- Recommend adding Wiper Kit (77700-V4367)
- Requires Non Modular Cab Component Mounting Kit (77700-V4363)



## Metal Canopy

77700-V4364 (V4364)

RTV520

- Metal canopy to keep the operator and passenger out of the elements
- Requires Non Modular Cab Component Mounting Kit (77700-V4363)



## Non Modular Cab Component Mounting Kit

77700-V4363 (V4363)

RTV520

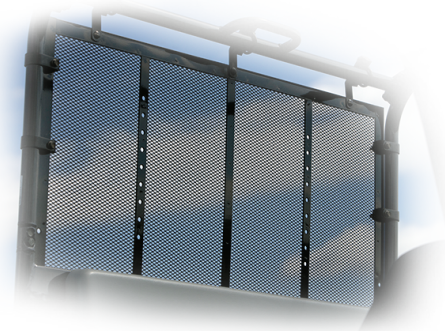
- Required to install Poly Windshield (77700-V4365) or Metal Canopy (77700-V4364)

## Rear Cargo Screen

Black K7311-99590

RTV520

- Rear net mounts directly to the ROPS and prevents objects from entering the operator area from behind





The following 3 Components are not compatible with Cab Enclosure Systems.



**A1**  
**Upper Glass Windshield**  
K7311-99280 (V4316)  
RTV520

- Upper glass windshield to provide a top front barrier from wind, dust, and rain
- Recommend adding Lower Poly Windshield (K7311-99290) for complete full coverage



**B1**  
**Lower Poly Windshield**  
K7311-99290 (V4315)  
RTV520

- Lower Poly windshield to provide a lower front barrier from wind, dust, and rain
- Folds up to allow access to the bonnet
- Recommend adding Upper Glass Windshield (K7311-99280) for complete full coverage



**C1**  
**Plastic Canopy**  
K7311-99390 (V4321)  
RTV520

- Plastic canopy to keep the operator and passenger out of the elements



**Warn VRX Winch Kit**  
**3,500 lb. Steel Cable 77700-11552**  
RTV520

- IP68 waterproofing system standard
- Redesigned & improved brake system
- Improved and redesigned clutch system
- Engineered system which outperforms the competition
- Comes with winch remote for operation outside of cabin
- Limited lifetime mechanical & 3 year electrical warranty
- Requires K7311-97313 Winch Mounting Kit for RTV-500 and RTV-520



**Black Front Grill Guard**  
K7321-99210  
RTV520

- With this stylish heavy duty grill guard, you can keep the front of the RTV-520 protected while looking great



**2" Trailer Hitch Ball Mount**  
77700-V4349 (V4349)  
RTV520

- SAE Class II approved
- Max Tongue/Towing 350/3500 lbs
- Glass black finish
- Trailer ball not included





# CAB ACCESSORIES

## Backup Beeper

K7321-99640  
RTV520

- Alert the surrounding people when operating in reverse



## Speedometer

K7311-99650 (V4333)  
RTV520

- Displays speeds up to 30 mph (50 km/h)



## Headrest

K7421-99550  
RTV520

- Provides head support
- Sold individually
- Requires Headrest Stay Kit (Black - K7311-99580)



## Headrest Stay Kit

Black K7311-99580 (V4341A)  
RTV520

- Sold individually
- Required to install Headrest (K7501-99550 or K7421-99550)



## Side Mirror

ROPS 77700-V4358 (V4338)  
RTV520

CAB 77700-V5059 (V5059)  
RTV520

- Increases operator visibility
- Shatter resistant tempered convex mirror with an impact-resistant housing
- Sold individually



CAB



ROPS

### Front Accessory Box

K7321-99560  
RTV520

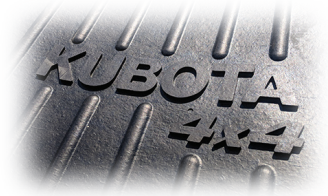
- Mounts under the hood to hold small items securely



### Cargo Box Mat

K7311-99200 (V4351)  
RTV520

- Durable, polyurethane cargo box pad designed to protect all types of cargo



### Electric Angle Kit

V4303  
RTV520

- Converts a manual angle blade to an electric angle blade making snow removal even easier

### Glove Box Kit

K7321-99570  
RTV520

- Mounts under dash on driver's side
- Not compatible 77700-V4314 Cab Heater Kit



### 60" Front Blade

V4308B \*  
RTV520

- 60" wide (straight) snow blade with trip spring
- 52" plow width @ 30° max angle
- Electric lift with manual angle adjustment
- Includes adjustable skid shoes and dedicated hitch
- Not compatible with 2" Trailer Hitch Ball Mount (77700-V4349)
- Now compatible with the Electric Angle Kit (V4303)



### Snow Deflector

V4307 \*  
RTV520

- Rubber deflector mounted to the top of the 60" Front Blade (V4308B) to reduce the throw of snow and debris from the front blade
- Requires 60" Front Blade (V4308B)

### Heavy Duty Cutting Edge

V4306 \*  
RTV520

- Upgraded cutting edge constructed of heavy duty mild carbon steel
- Cutting edge is reversible for extended wear
- Requires 60" Front Blade (V4308B)

### Standard Cutting Edge

V4305 \*  
RTV520

- Replacement standard cutting edge which is standard on 60" Front Blade (V4308B)
- Cutting edge is reversible for extended wear
- Requires 60" Front Blade (V4308B)



# TIRES & WHEELS

## HDWS Steel Tire & Wheel Assembly

**Front** K7321-19310

**Rear** K7321-19410

**RTV520**

- Includes 1 OEM tire and steel wheel
- Front - 24x9-12 6-ply tire
- Rear - 24x11-12 6-ply tire
- HDWS tread design are non-directional



## ATV Alloy Tire & Wheel Assembly

**Front Left** K7321-99850

**Front Right** K7321-99860

**Rear Left** K7321-99870

**Rear Right** K7321-99880

**RTV520**

- Includes 1 OEM tire and alloy wheel
- Front - 24x9-12 6-ply tire
- Rear - 24x11-12 6-ply tire
- ATV tread design are directional (left or right)

## ATV Steel Tire & Wheel Assembly

**Front Left** K7321-19110

**Front Right** K7321-19160

**Rear Left** K7321-19210

**Rear Right** K7321-19260

**RTV520**

- Includes 1 OEM tire and steel wheel
- Front - 24x9-12 6-ply tire
- Rear - 24x11-12 6-ply tire
- ATV tread design are directional (left or right)

## HDWS Alloy Tire & Wheel Assembly

**Front** K7321-99800

**Rear** K7321-99810

**RTV520**

- Includes 1 OEM tire and alloy wheel
- Front - 24x9-12 6-ply tire
- Rear - 24x11-12 6-ply tire
- HDWS tread design are non-directional



## Strobe Light Kit

77700-V4318 (V4318)

RTV520

- Strobe light with rubber base and polycarbonate lens
- On/off toggle switch included
- Not compatible with Plastic Canopy (K7311-99390)
- Requires Plastic Canopy (77700-V4312) or Hard Cab Enclosure (77700-11821)



## Turn Signal/Hazard Light Kit

K7321-99610

RTV520

- Includes two front hazard/indicator lamps and two rear combination hazard/indicator/tail lamp assemblies
- Not compatible with 77700-V4365 Windshield, 77700-V4368 Windshield, or Hard Cab Enclosure 77700-11821

## LED Work Light Kits

Front LED Work Light Kit (2) 77700-11933

RTV520

Rear LED Work Light Kit (1) 77700-11934

RTV520

- Six high intensity LEDs
- Ideal for off-road driving only
- Measured lumen: 1,000 lm
- Multivolt 10-30V DC
- Mounting: upright or flush
- Dimensions: 1.8"W x 6.3"H x 2.5"D  
2.4"W x 7.7"H x 1.8"D









## SIDEKICK

### Poly Windshield

77700-VP0804A

- Fixed hard coated poly windshield to provide a front barrier from wind, dust, and rain
- Includes 4 quick clamps preinstalled for a quick and easy install

### Poly Flip Windshield

77700-VP0805

- Flip hard coated poly windshield to provide a front barrier from wind, dust, and rain
- Includes 4 quick clamps preinstalled for a quick and easy install

### Glass Windshield

77700-VP0802

- Fixed laminated glass windshield to provide a front barrier from wind, dust, and rain
- Includes 4 quick clamps preinstalled for a quick and easy install
- Recommend adding Wiper Kit (77700-VP0817) and Washer Kit (77700-VP0818)

### Premium Roof

77700-VP0801A

- Twin sheet vacuum formed black plastic roof with plug & play connections for electrical accessories and Premium Audio System (77700-09070)
- Keep the operator and passenger out of the elements

### Premium Audio System

77700-09070

- Rugged Jensen Bluetooth audio system offers AM/FM, USB, and Auxiliary inputs
- Includes two Jensen speakers & antenna
- Not compatible with the Sport Roof (77700-VP0800)
- Requires Accessories Wiring Harness (77700-V0881A)

### Sport Roof

77700-VP0800A

- Single sheet vacuum formed black plastic roof
- Keep the operator and passenger out of the elements

### Sport Roof Seal Panel Kit

77700-VP0807

- Not compatible with Premium Roof (77700-VP0801A)
- Required when using Heater Kit (77700-V5247) to create a fully sealed cab

Premium Roof



Premium Audio System

Sport Roof



Sport Roof Seal Panel Kit



Poly Windshield



Poly Flip Windshield



Glass Windshield



### Wiper Kit

77700-VP0817

- Includes a single wiper to keep the glass windshield clear from dust and rain
- Compatible only with Glass Windshield (77700-VP0802)
- Requires Accessory Wiring Harness (77700-V0881A)

### Washer Kit

77700-VP0818

- Upgrade the wiper kit with a washer kit to help keep the glass windshield clear
- Compatible only with Glass Windshield (77700-VP0802)
- Requires Wiper Kit (77700-VP0817) and Accessory Wiring Harness (77700-V0881A)

"VP" part numbers only compatible with VP cab components unless otherwise noted.

## Antenna

K7711-63160

- Optional antenna for the Premium Audio System (77700-09070) for AM/FM

## Poly Rear Panel

77700-VP0806

- Poly rear panel to prevent wind, dust, and rain from entering into the operator's area
- Features a louver vent to allow airflow through the cabin

## Glass Rear Panel

77700-VP0803

- Glass rear panel to prevent wind, dust, and rain from entering into the operator's area

## Side Mirror Kit

Cab 77700-VP0815

ROPS 77700-V4358

- Increases operator visibility
- Cab mirrors sold in a pair (left & right)
- ROPS mirror sold individually

## Underhood Seal Kit

77700-VP0808

- Required when using Heater Kit (77700-V5247) to create a fully sealed cab

## Heater Kit

77700-V5247

- Add an integrated heater with an in-dash adjustable temperature
- Requires an Underhood Seal Kit (77700-VP0808) for a fully sealed cab
- Requires a Sport Roof Seal Panel Kit (77700-VP0807) when used with a Sport Roof (77700-VP0800)

## Front Heavy Duty Strut Kit

K7591-99180 (V5219)

- A pair of preassembled front struts with heavy duty springs
- No special tools required to install
- Required when installing an enclosed cab or front implement

## 2" ROPS Quick Clamp

77700-VP0819A

- Quick and easy ROPS clamp to attach an assortment of RTV accessories
- Sold individually

## Door Insert Kits

Orange 77700-VP0820

Camo 77700-VP0821

Green 77700-VP0822

Black 77700-VP0823

- Add matching accent door panels to match the body color of the hood and rear cargo bed panels

## Door Set

77700-VP0810

- Rear hinged thermoformed doors with steel frame for increased rigidity
- Large roll down glass windows
- Features a storage pocket with an integrated bottle holder
- Requires Front Heavy Duty Strut Kit (K7591-99180) when installing an enclosed cab or front implement

Door Set

Glass Rear Panel

Poly Rear Panel

Door Insert Kits





Switches for the lighting accessories below are included with their respective mounting kit.

## 6" LED Worklight

77700-VP0892

- Equipped with 6 LEDs and produces 1,000 lumens
- Features a quick connector for an easy front or rear worklight install
- Sold individually
- Requires Front Worklight Mounting Kit (77700-VP0893) or Rear Worklight Mounting Kit (77700-VP0894)
- Requires Sport Roof Worklight Supports (77700-V0890) when used with a Sport Roof (77700-VP0800)
- Requires two 2" ROPS Quick Clamps (77700-VP0819A) when installing 2 worklights onto the ROPS



## 13.5" LED Light Bar

77700-VP0891

- Features a low and high setting equipped with 12 LEDs capable of producing 2,200 lumens (High setting)
- Requires Light Bar Mounting Kit (77700-VP0895)
- Requires two 2" ROPS Quick Clamps (77700-VP0819A) when installed onto the ROPS



## Rotating Beacon

77700-08687

- Features a magnetic base
- 195 flashes per minute
- Requires Strobe Mounting Kit (77700-VP0896) and Accessory Wiring Harness (77700-V0881A)
- Requires one 2" ROPS Quick Clamps (77700-VP0819A) when installed onto the ROPS



## Strobe Light

77700-08686

- LED strobe light features a magnetic base
- 70 flashes per minute
- 11 flash patterns
- Requires Strobe Mounting Kit (77700-VP0896) and Accessory Wiring Harness (77700-V0881A)
- Requires one 2" ROPS Quick Clamps (77700-VP0819A) when installed onto the ROPS



Powering any of the 4 lights above will require a switch panel and accessory wiring harness. Add a ROPS wiring harness to add plug & play connections to a ROPS or Sport Roof configuration.

## Switch Panel

77700-10732

- Centralized accessory switches into one convenient location
- Required for 13.5" LED Light Bar (77700-VP0891), 6" LED Worklights (77700-VP0892), Strobe Light (77700-08686) or Rotating Beacon (77700-08687), Wiper Kit (77700-VP0817), and Washer Kit (77700-VP0818)



## ROPS Wiring Harness

77700-V0882

- Includes plug & play connections for 13.5" LED Light Bar (77700-VP0891) and two front 6" LED Worklights (77700-VP0892)
- Requires Accessory Wiring Harness (77700-V0881A)

## Accessory Wiring Harness

77700-V0881A

- Main harness to provide power to the Premium Roof (77700-VP0801A) or ROPS Wiring Harness (77700-V0882)
- Includes plug & play connections for a rear 6" LED Worklight (77700-VP0892), Strobe Light (77700-08686) or Rotating Beacon (77700-08687), Wiper Kit (77700-VP0817), and Washer Kit (77700-VP0818)



Need more lights? Check out these additional lighting kits, which include everything necessary to light the way to cross over to more.

## LED Headlight

K7811-99680

- Add an optional 2nd set LED headlight to give the machine that unique quad LED look



## Front Worklight Kit

K7811-99650

- Add optional front worklights to the Sidekick front guard
- Sold in a pair (left & right)
- Requires Sidekick Front Guard (K7811-97200)



## Reverse Alarm

K7811-99640

- Alert the surrounding people when operating in reverse



## Turn Signal / Hazard Light Kit

K7811-99610

- Includes two front hazard/indicator lamps and two rear combination hazard/indicator/tail lamp assemblies



## Interior Rearview Mirror

77700-VP0816

- Convex wide mirror and mounts to the ROPS
- Easy to install on a ROPS or Cab



## Headrest

K7811-99550

- Provides extra head support with a stylish design
- Sold individually
- Requires Headrest Stay Kit K7591-99540 (V5230A)



## Soft Grip Handle

77700-V0834

- Steel handle wrapped with a rubber grip
- Kubota branded heavy duty velcro strap
- Easy to install and remove



## Headrest Stay Kit

K7591-99540 (V5230A)

- Sold individually
- Required to install Headrest (K7811-99550)



## Premium Side Mirror

77700-10706

- Enhanced field of view
- Dual axis breakaway
- Three-way adjustment
- Adjustable blindspot mirror
- Anti-vibration technology
- ROPS Mounted
- Fits left or right side
- Easily return mirror to your preset position each time it breaks away for consistent viewing alignment



## Premium Roof Radio & Speaker Kit

77700-VP0897

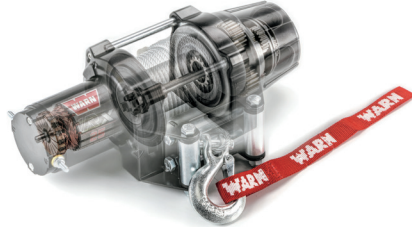
- Custom fit for RTV premium roof (77700-VP0801A) roof sold separately
- Rugged Jensen Bluetooth audio systems offers AM/FM, USB and aux inputs
- Includes two Jensen speakers
- Not compatible with the Sport Roof (77700-VP0800)
- Requires Accessories Wiring Harness (77700-V0881A)
- AM/FM/WB/USB Mini Bluetooth® Stereo (77700-09065)











## Warn VRX & Axon Winches

**Winch Kit VRX 3,500 lb. Steel Cable 77700-11552**

**Winch Kit VRX 4,500 lb. Synthetic Rope 77700-11554**

**Winch Kit AXON 3,500 lb. Steel Cable 77700-11556**

**Winch Kit AXON 4,500 lb. Synthetic Rope 77700-11558**

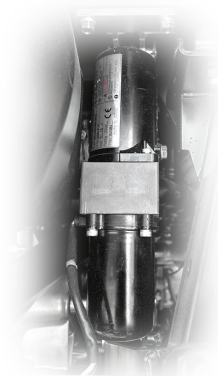
- IP68 waterproofing system standard
- Redesigned & improved braking system
- New manual clutch for improved durability & sealing
- Engineered to outperform the competition
- The Axon line of winches provides class-leading electronics that help prevent motor failure and offer half the installation time compared to the VRX
- Limited lifetime mechanical & 3 year electrical warranty
- Dash-mounted switch and remote standard
- **Fits 2-seater units only**



## Electric Over Hydraulic Bed Lift

K7811-99670

- Convert a manual bed lift to an electric over hydraulic bed lift





# GUARDS





## Sidekick Front Guard

K7811-97200

- Replacement RTV-XG850 Sidekick front guard
- Upgrade the front appearance
- Additional parts required: hardware not included



## Rear Bumper

K7811-99250

- Upgrade the visual appearance while guarding the cargo bed
- Includes Tail Lamp Guards (K7811-99660)



## Plastic Bumper

K7811-99220

- Upgrade the visual appearance of the front bumper



## Tail Lamp Guard

K7811-99660

- Upgrade the visual appearance while protecting the tail lamps
- Sold in a pair (left & right)



## Front Under Guard

K7811-99240

- Upgrade the visual appearance while guarding the front underside



## A-Arm Guard

Front K7811-99150

Rear K7811-99160

- Metal guards to guard against debris
- Sold in a pair (left & right)



## Bush Guard

K7811-99230

- Upgrade the visual appearance while guarding the front



## Mud Guard

Front K7591-99520 (V5225)

Rear K7811-99510

- Add a visual appeal while guarding against debris
- Sold in a pair (left & right)



# CARGO / STORAGE

## Deluxe RTV Cargo Box

77700-08760

- Features 4.5 cu. ft. of cargo capacity in a tough and durable polyethylene construction to resist corrosion, water, and dust
- Lockable latches to secure your cargo
- Transport your tools and equipment into some of the most extreme terrain and conditions
- Easy-to-lift covers providing easy access from either side of the box
- Sliding and removable tool trays for better organization
- Great for outdoorsmen - non-reflective surfaces
- Requires 2 pairs of Cargo Clamps (K7811-99560) and Plastic Cargo Box Mounting Kit (77700-V0838)
- Requires 2 additional Plastic Cargo Box Mounting Kits (77700-V0838) when installed with RTV Rubber Cargo Bed Mat (77700-V0830)



## Cargo Clamp

K7811-99560

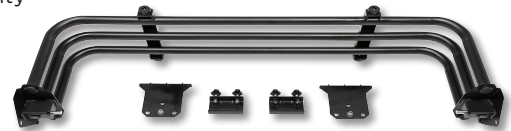
- Drill-less cargo bed clamp with interchangeable rubber inserts
- Sold in a pair



## Bed Extender

K7811-99570

- Drill-less design and can be positioned along the length of the cargo bed
- Can be positioned to extend or divide the cargo bed capacity



## Cargo Bed Rail

K7811-99590

- Increase cargo bed capacity
- Sold in a pair (left & right)
- Not compatible with Deluxe RTV Cargo Box (77700-08760)



## Rack Over Hood

77700-V0831

- Mounts to the front guard to add additional storage over the front hood
- Designed to be removed quickly without tools
- Can be pivoted to access the components under the front hood for general service and maintenance
- Not compatible with Plastic Bumper (K7811-99220)



## RTV Rubber Cargo Bed Mat

77700-V0830

- Rubber compression molded rubber with integrated Kubota branding
- Protects the cargo bed from scratches and scuff marks
- Prevent objects from sliding around the cargo bed





## 72" General Duty Front Blade V5008\*

- 72" wide general purpose snow blade with 19" moldboard height and 12 gauge moldboard thickness
- 64.5" plow width @ 30° max angle
- Electric lift with manual angle adjustment
- Requires Front Heavy Duty Strut Kit (K7591-99180) and General Purpose Front Guard (Black - K7591-97900)





# TIRES & WHEELS

## Tire & Alloy Wheel Assembly

**Green ATV Left** K7811-99850

**Green ATV Right** K7811-99860

**Green HDWS** K7811-99800

**Black ATV Left** K7591-99850 (ARTV5212L)

**Black ATV Right** K7591-99860 (ARTV5212R)

**Black HDWS** K7591-99800 (ARTV5214)

**Silver ATV Left** K7591-99830 (ARTV5211L)

**Silver ATV Right** K7591-99840 (ARTV5211R)

**Silver HDWS** K7591-99790 (ARTV5213)

- Includes 1 OEM tire and alloy wheel
- 25x10-12 6-ply tire
- ATV tread design are directional (left or right)
- HDWS tread design are non-directional
- Requires alloy Wheel Hardware Kit (black - K7591-99140) or (silver - K7591-99170)



## HDWS Tire & Wheel Assembly

K7811-19410

- Includes 1 OEM tire and steel wheel
- 25x10-12 6 ply tire
- HDWS tread design are non-directional



## ATV Tire & Wheel Assembly

**Left** K7811-19210

**Right** K7811-19260

- Includes 1 OEM tire and steel wheel
- 25x10-12 6 ply tire
- ATV tread design are directional (left or right)





**RTV520  
CROSSROADS**



**X1140  
HUNTSMEN**

**DESCRIPTION**

**PART NUMBER**

Complete Cab Kit.....	77700-11821
Front Work Light Kit.....	77700-11933
Rear Work Light Kit.....	77700-11934



**Scan here for  
Crossroads details**

**DESCRIPTION**

**PART NUMBER**

Metal Canopy FOPS (Black) .....	77700-VC5044
Laminated Glass Windshield (AS1) .....	77700-VC5020
Work Light Front LED Kit (2).....	77700-VC5050
Work Light Rear LED Kit (1).....	77700-VC5051A
Side Mirror Kit.....	77700-VC5076
Wireharness Switch Panel Kit (Multi).....	77700-VC5080
Guard CV Joint (2) Front Kit.....	K7591-99150
Guard CV Joint (2) Rear Kit.....	K7591-99160
Guard Tail Lamp Kit.....	K7591-99660
VRX 35 Steel Cable Winch Kit .....	77700-11553



**Scan here for  
Huntsmen details**





**SIDEKICK  
MARKSMAN**



**SIDEKICK  
FRONTIER**

**DESCRIPTION**

**PART NUMBER**

Sport Roof .....	77700-VP0800A
Poly Flip Windshield .....	77700-VP0805
Side Mirrors (2) .....	77700-V4358
Kit Front Work Light Supplemental .....	77700-V0890
ROPS Wire Harness.....	77700-V0882
Accessory Wire Harness.....	77700-V0881A
Work Light 6" .....	77700-VP0892
Kit Front Work Light Installation.....	77700-VP0893
Kit Rear Work Light Installation .....	77700-VP0894
VRX 35 Wire Rope Kubota.....	77700-11552
Tail Lamp Guard.....	K7811-99660
A-Arm Guard Front .....	K7811-99150
A-Arm Guard Rear .....	K7811-99160
Under Guard.....	K7811-99240
Bush Guard.....	K7811-99230

**DESCRIPTION**

**PART NUMBER**

Premium Roof with Wiring Harness.....	77700-VP0801A
Glass Windshield .....	77700-VP0802
Rear Panel Glass.....	77700-VP0803
Door Set.....	77700-VP0810A
Under Hood Seal Kit .....	77700-VP0808
Accessory Wire Harness.....	77700-V0881A
Work Light 6" .....	77700-VP0892
Kit Front Work Light Installation.....	77700-VP0893
Kit Rear Work Light Installation .....	77700-VP0894
Winch Kit Axon 45-S Kubota OE.....	77700-11558
Deluxe RTV Cargo Box .....	77700-08760
Kit Cargo Box Installation .....	77700-V0838
Kit Cargo Clamp .....	K7811-99560
Bed Extender.....	K7811-99570
Heavy Loader Damper Front.....	K7591-99180



**Scan here for  
Marksman details**



**Scan here for  
Frontier details**



## BREAK IN HOURS

- Air Cleaner Element:**  
Inspect & Clean as Needed
- Engine Oil:** Change - Sidekick Only
- Pre Cleaner Element:**  
Inspect & Clean as Needed - 520 Only
- Carbon Canister Air Filter:**  
Inspect & Clean as Needed - 520 & Sidekick California Model Only
- Fuel Filter Element:** Inspect & Clean as Needed
- Brake Pads & Fluid:** Inspect & Clean as Needed
- General Lubrication:** All Fittings, Pivots, Linkages & Cables, Etc.

## 100 HOURS

- Engine Oil & Filter:** Change - 20 Hour Interval for Sidekick
- Transmission Oil Filters:**  
Change
- Wheel Fastener Torque:**  
Inspect
- Tire Wear:** Inspect
- CVT Belt:** Inspect - Sidekick Only
- Brake Pads & Fluid:** Inspect & Clean as Needed
- General Lubrication:** All Fittings, Pivots, Linkages & Cables, Etc. - Every 50

## 200 HOURS

- Air Cleaner Element:**  
Replace
- Engine Oil & Filter:** Change
- Pre Cleaner Element:**  
Inspect & Clean as Needed - 520 Only
- Transmission Oil Filters:**  
Replace
- Hydraulic Tank Oil:** Change
- Carbon Canister Air Filter:**  
Inspect & Clean as Needed - 520 & Sidekick California Model Only
- Fuel Filter Element:** Inspect & Clean as Needed
- Brake Pads & Fluid:** Inspect & Clean as Needed
- General Lubrication:** All Fittings, Pivots, Linkages & Cables, Etc.

\*Break In period is 50 hours



## 300 HOURS

**Air Cleaner Element:** Inspect & Clean as Needed

**Engine Oil:** Change - Sidekick Only

**Pre Cleaner Element:** Inspect & Clean as Needed - 520 Only

**Carbon Canister Air Filter:** Inspect & Clean as Needed - 520 & Sidekick California Model Only

**Fuel Filter Element:** Inspect & Clean as Needed

**Brake Pads & Fluid:** Inspect & Clean as Needed

**General Lubrication:** All Fittings, Pivots, Linkages & Cables, Etc.

## 400 HOURS

**Air Cleaner Element:** Inspect & Clean as Needed

**Engine Oil & Filter:** Change

**Pre Cleaner Element:** Inspect & Clean as Needed - 520 Only

**Transmission Oil Filters & Fluid:** Replace

**Hydraulic Tank Oil:** Change

**Cab Air Filter:** Inspect & Clean as Needed - X1100C

**Front Knuckle Case Oil:** Change - X1100C

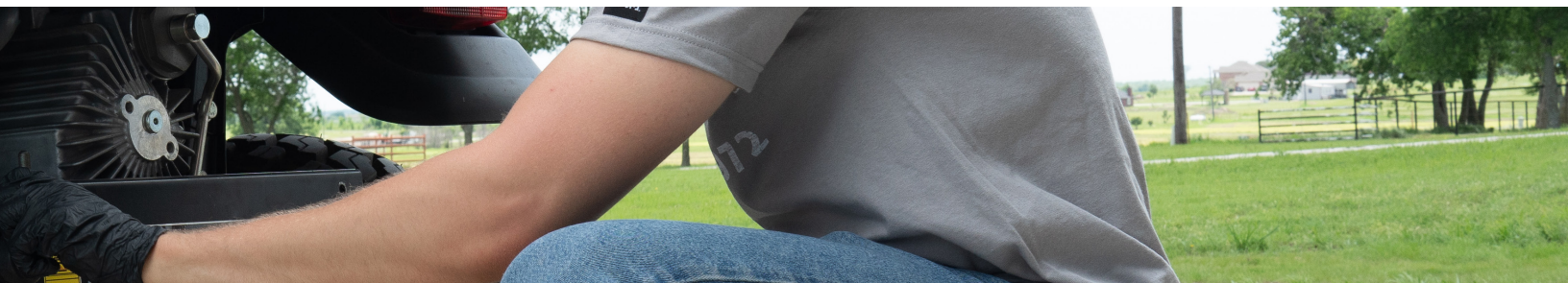
**Front Axle Case Oil:** Change

**Carbon Canister Air Filter:** Inspect & Clean as Needed - 520 & Sidekick California Model Only

**Fuel Filter Element:** Inspect & Clean as Needed

**Brake Pads & Fluid:** Inspect & Clean as Needed

**General Lubrication:** All Fittings, Pivots, Linkages & Cables, Etc.



## RTV-X SERIES



**A1**

### Poly Windshield

77700-VC5023 (VC5023)  
RTV-X, X900, X1120, X1130,  
X1140

- Steel framed, hard coated poly windshield to provide a front barrier from wind, dust, and rain
- Features latches to allow airflow through the cabin
- Compatible with Wiper Kit (77700-VC5030)



**A2**

### Laminated Glass Windshield (AS1)

77700-VC5020 (VC5020)  
RTV-X, X900, X1120, X1130,  
X1140

- Steel framed, laminated glass windshield to provide a front barrier from wind, dust, and rain
- Designed to hold together when shattered and prevents glass from breaking into large sharp pieces
- Features latches to allow airflow through the cabin
- Compatible with Wiper Kit (77700-VC5030)



**A3**

### Tempered Glass Windshield (AS2)

77700-VC5025 (VC5025)  
RTV-X, X900, X1130, X1140

- Steel framed, tempered glass windshield to provide a front barrier from wind, dust, and rain
- Designed to crumble into small granular chunks instead of sharp jagged shards
- Features latches to allow airflow through the cabin
- Compatible with Wiper Kit (77700-VC5030)



**B**

### Wiper Kit

77700-VC5030 (VC5030)  
RTV-X, X900, X1120, X1130,  
X1140

- Includes a single 16" wiper to keep glass & poly windshields clear from dust and rain
- Compatible only with Poly Windshield (77700-VC5023), Laminated Glass Windshield (77700-VC5020), & Tempered Glass Windshield (77700-VC5025)



Alternative windshields for a windshield & canopy configuration only.

### Poly Windshield

**Clear** K7591-99290 (V5258)  
**Tinted** K7591-99260 (V5259)  
RTV-X, X900, X1120

- Alternative, crack-resistant poly windshield for those who do not require the compatibility of a full cab enclosure
- Not compatible with Wiper Kit (77700-VC5030)
- Compatible only with Plastic Canopy (K7591-99390)



### Acrylic Windshield

**Clear** 77700-V5027 (V5027)  
**Tinted** 77700-V5028 (V5028)  
RTV-X, X900, X1120, X1130, X1140

- Alternative, scratch-resistant acrylic windshield for those who do not require the compatibility of a full cab enclosure
- Not compatible with Plastic Canopy (K7591-99390) & Wiper Kit (77700-VC5030)

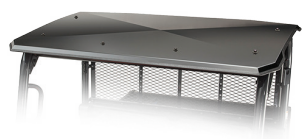






**C1**  
**Metal FOPS Canopy**  
**Black** 77700-VC5000 (VC5000)  
**Orange** 77700-VC5001 (VC5001)  
 RTV-X, X900, X1120, X1130  
**Black** 77700-VC5044 (VC5044)  
 X1140

- Metal canopies are FOPS certified to provide additional protection while keeping the operator and passenger out of the elements
- Not compatible with Poly Windshield (clear - K7591-99290) or (tinted - K7591-99260)



**C2**  
**Plastic Canopy**  
**Black** 77700-VC5011 (VC5011)  
 RTV-X, X900, X1120, X1130  
**Black** 77700-VC5043 (VC5043)  
 X1140

- Plastic canopy to keep the operator and passenger out of the elements
- Not compatible with Poly Windshield (clear - K7591-99290) or (tinted - K7591-99260)



Alternative canopy for a windshield & canopy configuration only.

**Black Plastic Canopy**  
 K7591-99390 (V5221)  
 RTV-X, X900, X1120, X1130

- Alternative plastic canopy for those who do not require the compatibility of a full cab enclosure
- Compatible only with Poly Windshield (clear - K7591-99290) or (tinted - K7591-99260)



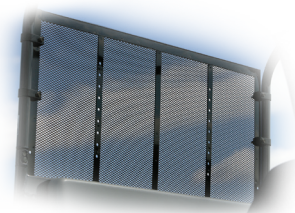
**D1**  
**Glass Rear Panel**  
 77700-VC5040 (VC5040)  
 RTV-X, X900,  
 X1120, X1130

- Steel framed, glass rear panel to prevent wind, dust, and rain from entering into the operator's area



**D2**  
**Rear Screen**  
**Gray** K7711-99280 (V4258)  
**Black** K7731-99280 (V4258A)  
 X1100

- Optional rear screen mounts to the RTV-X1100's ROPS structure acting as a barrier between the bed and rear window





## A1

### Metal Door Set

**Black 77700-VC5090 (VC5090)**

**Orange 77700-VC5091 (VC5091)**  
RTV-X, X900, X1120, X1130

- Steel doors featuring an upper sliding window and a lower pocket window
- Convenient heavy duty hinges allow for doors to be removed and stored away
- Requires Front Heavy Duty Strut Kit (K7591-99180) or Front Heavy Duty Spring Kit (K7591-99190)



## A2

### Vinyl Door Set

**77700-VC5095 (VC5095)**

**RTV-X, X900, X1120, X1130**

- Vinyl doors featuring clear vinyl window
- Windows can be zipped open and rolled up
- Convenient heavy duty hinges allow for doors to be removed and stored away
- Requires Front Heavy Duty Strut Kit (K7591-99180) or Front Heavy Duty Spring Kit (K7591-99190)



## A3

### 4 Metal Door Set w/ Rear Panel

**77700-VC5045A**

**X1140**

- 4 steel doors featuring an upper sliding window and a lower pocket window
- Includes a rear panel to fully enclose the RTV-X1140 in a two row configuration when combined with a compatible canopy and windshield
- Convenient heavy duty hinges allow for doors to be removed and stored away
- Recommend adding a mid-panel to fully enclose the front row of the RTV-X1140 when combined with a compatible canopy and windshield



### Mid-Panel

**Steel w/ Sliding Window 77700-VC5046 (VC5046)**

**Vinyl 77700-VC5047 (VC5047)**

**X1140**

- Add an optional mid-panel to completely enclose the front row of the RTV-X1140
- Requires 4 Metal Door Set with Rear Panel (77700-VC5045)



**Steel with Sliding Window**

### Front Heavy Duty Spring Kit

**K7591-99190 (V5218)**

**RTV-X, X900, X1120, (X1100 & X1140 - Standard)**

- Reuse the front struts and upgrade the front springs to heavy duty springs
- Required when installing an enclosed cab and/or front implement

### Front Heavy Duty Strut Kit

**K7591-99180 (V5219)**

**RTV-X, X900, X1120, (X1100 & X1140 - Standard)**

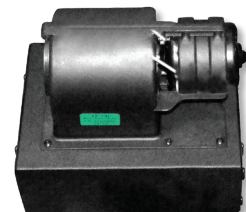
- A pair of preassembled front struts with heavy duty springs
- No special tools required to install
- Required when installing an enclosed cab and/or front implement

### Heater Kit

**77700-VC5083A (VC5083A)**

**RTV-X, X900, X1120, X1130, X1140**

- Add an integrated cab heater with well-placed vents to stay warm during frigid winters
- Requires Wire Harness (Multiple - 77700-VC5080) or (Single - 77700-VC5081)





## Side Mirror Kit

Cab 77700-VC5076 (VC5076)

ROPS 77700-V4358 (V4358)

RTV-X, X900, X1120, X1130, X1140

- Increases operator visibility
- Cab mirrors sold in a pair (left & right)
- ROPS mirror sold individually



## Heavy Duty AM/FM/WB/USB/iPhone®/iPod®/SiriusXM Ready® Radio

77700-04754

X1100

- 180-watt max output (45W x 4)
- iPod/iPhone controls and charging via front USB
- SiriusXM Ready (requires SiriusXM tuner and antenna)
- Seven-channel NOAA weatherband tuner and "Weather Alert"
- Microphone sold separately



## Premium Side Mirror

77700-10706

RTV-X, X900, X1120, X1130

X1140

- Enhanced field of view
- Dual axis breakaway
- Three-way adjustment
- Adjustable blindspot mirror
- Anti-vibration technology
- ROPS Mounted
- Fits left or right side
- Easily return mirror to your preset position each time it breaks away for consistent viewing alignment



## Heavy Duty AM/FM/USB/AUX/WB/Bluetooth®/iPhone®/iPod®/SiriusXM Ready® Radio

77700-06377

X1100C

- Same features as 77700-04755 with the exception of a CD player and App Ready
- Includes Bluetooth Microphone (77700-04786)
- \*Fits all cabbed \*M and \*L units, RTV 1100's (RTV-1100, RTV-1100C, RTV-X1100C), Wheel Loaders (R630NT3, R630R431) and B Series (B2650HSDC, B3350HSDC) CAB Models Only



## Side Mirror

77700-V5059 (V5059)

X1100

- Shatter resistant tempered convex glass for increased durability
- Impact resistant ABS housing for lasting durability
- Ball socket joint provides easy adjustment and wide range view
- Sold individually



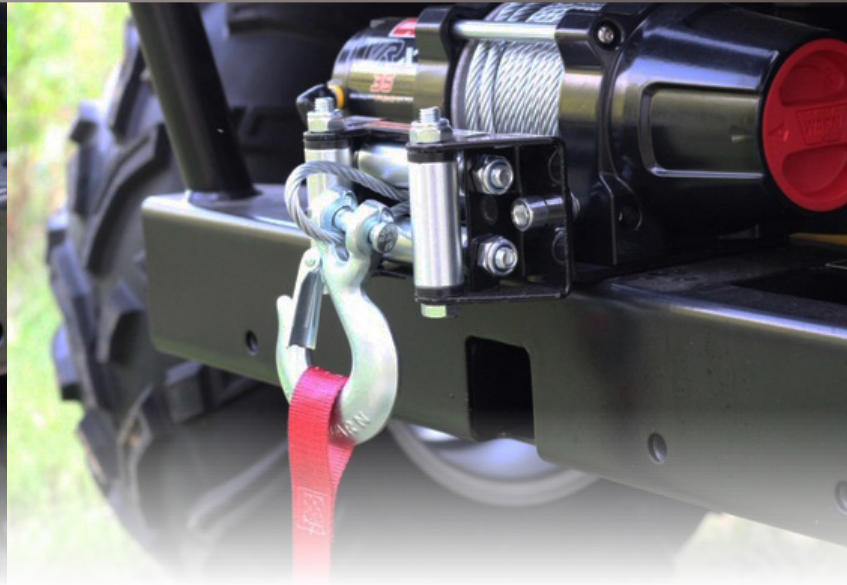
## Heavy Duty AM/FM/WB Radio

77700-04753

X1100

- 160-watt max output (40W x 4)
- Seven-channel NOAA weatherband tuner
- Segmented, high-visibility LCD display with clock
- Two-wire hook-up prevents battery drain when vehicle is off





**Warn VRX & Axon Winches**

RTV-X, X900, X1100, X1120

**VRX 3,500 lb. Steel Cable 77700-11552**

**VRX 4,500 lb. Synthetic Rope 77700-11554**

**AXON 3,500 lb. Steel Cable 77700-11556**

**AXON 4,500 lb. Synthetic Rope 77700-11558**

X1130, X1140

**VRX 3,500 lb. Steel Cable 77700-11553**

**VRX 4,500 lb. Synthetic Rope 77700-11555**

**AXON 3,500 lb. Steel Cable 77700-11557**

**AXON 4,500 lb. Synthetic Rope 77700-11559**

- IP68 waterproofing system standard
- Redesigned & improved braking system
- New manual clutch for improved durability & sealing
- Engineered to outperform the competition
- The Axon line of winches provides class-leading electronics that help prevent motor failure and offer half the installation time compared to VRX
- Limited lifetime mechanical & 3 year electrical warranty
- Dash-mounted switch and remote standard



**Hydraulic Bed Lift**

K7591-99320 (V5242)

Basic RTV-X,  
X900, X1120  
(Worksite & Camo X900,  
Worksite & Camo X1120,  
X1100, and X1140 - Standard)

- Upgrade a manual bed lift to a hydraulic bed lift



**2" Trailer Hitch Ball Mount**

77700-V5200 (V5200)

RTV-X, X900, X1120, X1100, X1140

- Towing is easy with this 2" Trailer Ball Mount Kit (does not include hitch ball)





# GUARDS

## General Purpose Front Guard

Gray K7591-97200  
X900

Black K7591-97900  
X900, X1120

- Replacement general purpose front guard



## Worksite Front Guard

Gray K7591-97210  
X900

Black K7591-97910  
X900, X1120, X1140

- Replacement worksite front guard



## Deluxe Front Guard

Gray K7421-97200  
X1120, X1100, X1140

Black K7421-97900  
X1120, X1100, X1140

- Replacement deluxe front guard



## Tail Lamp Guard Kit

K7591-99660 (V5227)  
RTV-X, X900, X1120, X1100, X1130, X1140

- Protect your tail light from damaging debris by installing this Tail Lamp Guard Kit



## CV Joint Guard

Front K7591-99150 (V5238)

Rear K7591-99160 (V5239)

X900, X1120, X1100, X1140

- Help protect your front CV Joint from rocks and stumps with this CV Joint Guard
- Reduce potential damage to the rear CV Joint with this CV Joint Guard



## Mud Guard

Front K7591-99520 (V5225)

Rear K7591-99510 (V5226)

RTV-X, X900, X1100, X1120, X1130, X1140

- Cut down on flying mud by installing this Mud Guard Kit
- Decrease mud spatter off the rear wheels with this Mud Guard Kit

## Deluxe RTV Cargo Box

77700-08760 (V0839)

RTV-X Standard Bed, X900, X1120, X1100, X1140

- Features 4.5 cu. ft. of cargo capacity in a tough and durable polyethylene construction to resist corrosion, water, and dust
- Lockable latches to secure your cargo
- Transport your tools and equipment into some of the most extreme terrain and conditions
- Easy-to-lift covers providing easy access from either side of the box
- Sliding and removable tool trays for better organization
- Great for outdoorsmen - non-reflective surfaces
- **Requires** 2 pairs of Cargo Clamps (K7811-99560) and Plastic Cargo Box Mounting Kit (77700-V0838)
- **Requires** 2 additional Plastic Cargo Box Mounting Kits (77700-V0838) when installed with RTV Rubber Cargo Bed Mat (77700-V0830)



## 2 Cargo Clamps

K7811-99560 (V0859)

RTV-X Standard Bed, X900, X1120, X1100, X1140

- Drill-less cargo bed clamp with interchangeable rubber inserts
- Sold in a pair



# NEW

## Cargo Bed Seal Kit

77700-11096

X900, X1100-C, X1120

- Perfectly sized plate fills the gap
- Ideal for protection against debris falling the engine bay below the cargo bed



## RTV Rubber Cargo Bed Mat

77700-V0830 (V0830)

X900, X1100, X1120

- Rubber compression molded rubber with integrated Kubota branding
- Protects the cargo bed from scratches and scuff marks
- Prevent objects from sliding around the cargo bed



## Plastic Bed Liner

K7591-99580 (V5229)

X900, X1100, X1120

- Prevent bed dents and dings with this high-quality plastic bed liner



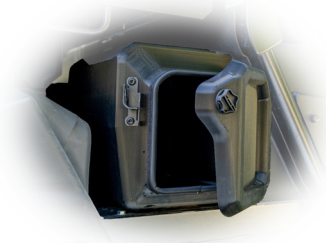
# CARGO ACCESSORIES

## Storage Box

K7921-99560  
X1130

**NEW**

- Designed to mount underneath the cargo bed
- Includes 2 plastic lockable storage boxes (one for each side)



## Cargo Panel Light

K7921-99570  
X1130

**NEW**

- Two 6" LED lights



**NEW**

## Cargo Winch

K7921-99580  
X1130

- Comes with a wireless winch controller
- Has a 750lb capacity



**NEW**

## Extended Tailgate

K7921-99590  
X1130

- Allows the tailgate to rest against the ground when the bed is fully raised
- Folds out of the way when not in use



## Interior Rearview Mirror

77700-V4266 (V4266)

RTV-X, X900, X1120,  
X1130, X1140

- Mount an interior rearview mirror onto the ROPS for added visibility



## Interior Rearview Mirror

77700-VP0816 (VP0816)

RTV-X, X900, X1120, X1130, X1140

- Convex wide mirror and mounts to the ROPS
- Easy to install on a ROPS or Cab



## Sun Visor Kit

K7731-99270 (V5286)

X1110

- Match the interior of the RTV-X1100 with sun visors to block the sun
- Sold in a pair (left & right)



## Glove Box Cover Kit

K7591-99570 (V5234)

Basic RTV-X, X900, X1120, X1130  
(Worksite & Camo X900,  
Worksite & Camo X1120, X1100,  
and X1140 - Standard)

- Upgrade to a covered glove box to keep items away from the elements



## Headrest

Gray K7501-99550 (V4231XT)

RTV-X, X900, (RTV-X1100 -  
Standard)

Black K7421-99550 (V5231)  
X1120

- Add comfort and support to your day with this Headrest from Kubota
- Sold individually
- Requires Headrest Stay Kit (gray - K7591-99530) or (black -K7591-99540)



## Headrest Bracket Kit

Gray K7591-99530 (V5230)

Black K7591-99540 (V5230A)

RTV-X, X900, X1120, X1130

- Required to install headrest (gray - K7501-99550) or (black - K7421-99550)
- Sold individually



## Backup Alarm Kit

K7591-99640 (V5236)

RTV-X, X900, X1100, X1120,  
X1130, X1140

- Alert the surrounding people when operating in reverse



## Hand Throttle Kit

D902 Engine K7591-99450 (V5241)

X900

D1105 Engine K7421-99450 (V5243)

RTV-X, X1100, X1120

- Hold engine speed at a constant RPM regardless of vehicle speed







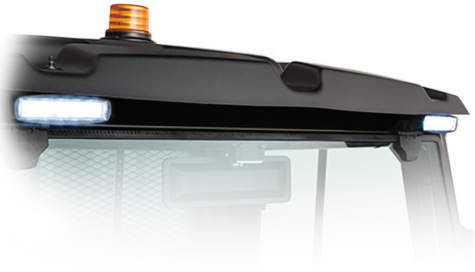


## 2 Front LED Work Light Kit

77700-VC5050 (VC5050)

RTV-X, X900, X1120, X1130, X1140

- Six high intensity LEDs on each light
- Illuminated, high quality rocker switch
- Sold in a pair (left & right)
- Only compatible with the "VC" cab components
- Requires Wire Harness (Multiple - 77700-VC5080) or (Single - 77700-VC5081)



## Rear LED Work Light Kit

77700-VC5051A (VC5051A)

RTV-X, X900, X1120, X1130, X1140

- Six high intensity LEDs on each light
- Illuminated, high quality rocker switch
- Sold individually
- Only compatible with the "VC" cab components
- Requires Wire Harness (Multiple - 77700-VC5080) or (Single - 77700-VC5081)



## Dome Light

77700-VC5053 (VC5053)

RTV-X, X900, X1120, X1130, X1140

- Built-in on/off rocker switch
- Bright 1-watt LED light
- Adjustable 40-degree swivel and spin
- Convenient for pre-dawn or working late into the night
- Only compatible with the "VC" cab components
- Requires Wire Harness (Multiple - 77700-VC5080) or (Single - 77700-VC5081)



## Strobe Light

77700-VC5056 (VC5056)

RTV-X, X900, X1120, X1130, X1140

77700-VC5058 (VC5058)  
X1100

- Amber beacon features 70 FPM pulse, 8 ash patterns
- Illuminated, high quality rocker switch
- Only compatible with the "VC" cab components
- Requires Wire Harness (Multiple - 77700-VC5080) or (Single - 77700-VC5081)
- Mounting bracket 77700-V4284 is included with kit



## 4-Way Strobe-type Flashers

77700-VC5057A (VC5057A)

RTV-X, X900, X1120, X1130, X1140

- Black and weatherproof housing for indoor or outdoor use
- 18 different flash patterns to choose from
- Only compatible with the "VC" cab components
- Requires Wire Harness (Multiple - 77700-VC5080) or (Single - 77700-VC5081)



Select either wiring harness setup below to power the 5 lights above individually or together.

## Switch Panel

77700-10732

- Centralized accessory switches into one convenient location
- Required for 13.5" LED Light Bar (77700-VP0891), 6" LED Worklights (77700-VP0892), Strobe Light (77700-08686) or Rotating Beacon (77700-08687), Wiper Kit (77700-VP0817), and Washer Kit (77700-VP0818)



## Wire Harness - Single

77700-VC5081 (VC5081)

RTV-X, X900, X1120, X1130, X1140

- For single electrical accessory or light
- In-line fuse for circuit protection
- Automotive relay included



# LIGHTS / ENGINE

## LED Work Light Kits

Front LED Work Light Kit 77700-11811  
X1100C

Rear LED Work Light Kit 77700-11812  
X1100C

- Six high intensity LEDs
- Ideal for off-road driving only
- Measured lumen: 1,000 lm
- Multivolt 10-30V DC
- Mounting: upright or flush
- Dimensions: 1.8"W x 6.3"H x 2.5"D  
2.4"W x 7.7"H x 1.8"D (flush)



Additional lighting options available with all the required.

## Halogen Front Work Lights

K7591-99620 (V5222)  
X900, X1120

K7731-99620 (V5282)  
X1100

- Halogen front work light kit includes 2 work lights
- For RTV-X1100, the lights mount to the top with everything necessary for installation
- For RTV-X900 and RTV-X1120, lights mount to the ROPS or Plastic Canopy (K7591-99390) with everything necessary for installation



## Halogen Rear Work Light

K7591-99630 (V5223)  
X900, X1120

K7731-99630 (V5283)  
X1100

- Halogen rear work light kit includes 1 work light
- For RTV-X1100, the lights mount to the top with everything necessary for installation
- For RTV-X900 and RTV-X1120, lights mount to the ROPS or Plastic Canopy (K7591-99390) with everything necessary for installation



## Hazard Light Kit

K7591-99610 (V5237)  
X900, X1120, X1140

K7731-99610 (V5257)  
X1100

K7121-99610  
RTV-X

- Includes two front hazard/indicator lamps and two rear combination hazard



## Strobe Light Mounting Bracket

77700-V4284  
X1100

- Sturdy 10GA cold-rolled steel for secure mounting
- Durable UV-resistant powder paint for long lasting durability



## Block Heater

77700-07942  
X900

70000-73595  
RTV-X, X1120, X1100,  
X1130, X1140

- Makes starting in cold climates less demanding on the engine



## Extended Oil Dipstick

D902 Engine K7591-99810 (V5202)  
X900

D1105 Engine K7621-99810 (V5204A)  
RTV-X, X900, X1120, X1130, X1140

- Check oil regularly and precisely without having to raise the dump bed



## ELECTRIC POWERED IMPLEMENTS & ATTACHMENTS

### 72" General Duty Front Blade

V5008\*

RTV-X, X900, X1100, X1120, X1130, X1140

- 72" wide general purpose snow blade with 19" moldboard height and 12 gauge moldboard thickness
- 64.5" plow width @ 30° max angle
- Electric lift with manual angle adjustment
- Recommend optional Hydraulic Angle Kit (V5007) to convert to hydraulic angle
- Requires Front Heavy Duty Strut Kit (K7591-99180) or Front Heavy Duty Spring Kit (K7591-99190)



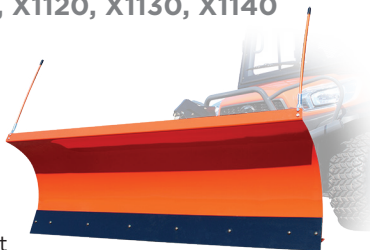
## HYDRAULIC POWERED IMPLEMENTS & ATTACHMENTS

### 72" XTRA Duty Front Blade

V5060\*

RTV-X, X900, X1100, X1120, X1130, X1140

- 72" wide heavy duty snow blade with 23.5" moldboard height and 12 gauge moldboard thickness
- 64.5" plow width @ 30° max angle
- Includes self contained electro-hydraulics for lift and angle adjustment
- Requires Front Heavy Duty Strut Kit (K7591-99180) or Front Heavy Duty Spring Kit (K7591-99190)



### 72" Commercial Straight Blade

V5290\*

RTV-X, X900, X1100, X1120, X1130

- 72" wide commercial snow blade with 21.75" moldboard height and 10 gauge moldboard thickness
- 62.4" plow width @ 30° max angle
- Hydraulic lift with down pressure and float
- Hydraulic angle adjustment with adjustable blade trip springs
- Recommend optional Markers (V5250)
- Requires Front Quick Hitch (V5289), Electro-Hydraulic Valve Kit (V5232), Auxiliary Hydraulic Pump (X900 - V5271) or (X1120/X1100 - V5272), & Front Heavy Duty Strut Kit (K7591-99180) or Front Heavy Duty Spring Kit (K7591-99190)



### 72" V-Plow Blade

V5291\*

RTV-X, X900, X1100, X1120, X1130

- 72" wide V-Blade (straight) with moldboard height 19 1/8" @ center, 20 1/2" @ ends, and 3/8" moldboard thickness
- 66" V position width and 59" scoop position width
- Hydraulic lift with down pressure and float
- Hydraulic angle adjustment with built-in relief valves to protect against impact
- Trip cutting edges
- Recommend optional Markers (V5250) and Curb Guards (V5256)
- Requires Front Quick Hitch (V5289), Electro-Hydraulic Valve Kit (V5232) & (3rd function - V5233), Auxiliary Hydraulic Pump (X900 - V5271) or (X1120/X1100 - V5272), & Front Heavy Duty Strut Kit (K7591-99180) or Front Heavy Duty Spring Kit (K7591-99190)



### 60" Rotary Broom

V5260\*

RTV-X, X900, X1100, X1120, X1130

- 60" wide rotary broom with 18" diameter poly brushes
- 50 1/2" width @ 25° max angle
- Reversible broom rotation
- Hydraulic lift and angle adjustment
- Recommend optional Markers (V5250)
- Requires Front Quick Hitch (V5289), Electro-Hydraulic Valve Kit (V5232) & (3rd function - V5233), Auxiliary Hydraulic Pump (X900 - V5271) or (X1120/X1100 - V5272), Hydraulic Oil Cooler (V5240), Hand Throttle Kit (V5245), & Front Heavy Duty Strut Kit (K7591-99180) or Front Heavy Duty Spring Kit (K7591-99190)





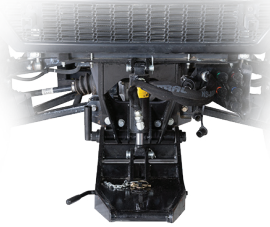
## HYDRAULIC POWERED MOUNTING SYSTEM

### Front Quick Hitch

V5289\*

RTV-X, X900, X1100,  
X1120, X1130

- Required quick hitch system designed for 72" Commercial Straight Blade (V5290), 72" V-Plow Blade (V5291), and 60" Rotary Broom (V5260) for easy implement changes



### Front Guard Adapter Kit

77700-V5255 (V5255)

RTV-X, X900, X1100, X1120, X1130

- Optional front guard adapter for Front Quick Hitch (V5289) to reinstall front guard when front quick hitch implements are put away for the season

## HYDRAULIC POWERED ATTACHMENTS

### Hydraulic Angle Kit

V5007\*

RTV-X, X900, X1100, X1120, X1130, X1140

- Optional hydraulic angle kit to upgrade 72" General Duty Front Blade (V5008) to hydraulic angle adjustment
- Requires Auxiliary Hydraulic Pump (X900 - V5271), (X1120/X1100 - V5272), or (X1140 - V5262) and Auxiliary Hydraulic Valve: One Valve (X900/X1120/X1100 - V5273), Two Valve (X900/X1120/X1100 - V5274), or One Valve (X1140 - V5263)

### Auxiliary Hydraulic Valve Kit

One Valve V5273\*

RTV-X, X900, X1100, X1120

One Valve V5263\*

X1130, X1140

Two Valve V5274\*

RTV-X, X900, X1120, X1100

- Required for Hydraulic Angle Kit (V5007) and aftermarket implements

### Hydraulic Oil Cooler

V5240\*

RTV-X, X900, X1100, X1120

- Required for 60" Rotary Broom (V5260)

### Hand Throttle Kit

V5245\*

RTV-X, X900, X1120, X1130, X1140

- Required for 60" Rotary Broom (V5260)

### Markers

V5250\*

X900, X1120, X1100

- Optional markers to increase visibility for 72" Commercial Straight Blade (V5290), 72" V-Plow Blade (V5291), or 60" Rotary Broom (V5260)

### Auxiliary Hydraulic Pump

D902 Engine V5271\*

X900

D1105 Engine V5272\*

RTV-X, X1100, X1120

D1105 Engine V5262\*

X1130, X1140

- Required for Hydraulic Angle Kit (V5007), hydraulic powered implements, and aftermarket implements

### Electro-Hydraulic Valve Kit

Two Function V5232A\*

RTV-X, X900, X1100, X1120

3rd Function V5233\*

RTV-X, X900, X1100, X1120

- Required for 72" Commercial Straight Blade (V5290), 72" V-Plow Blade (V5291), and 60" Rotary Broom (V5260)

### Hydraulic Coupler Outlet

V5276\*

RTV-X, X900, X1100, X1120, X1130, X1140

- Stationary applications only, optional coupler to power aftermarket implements
- Cannot be used to power hydraulic motor applications

### Curb Guards for V-Blade

V5256\*

X900, X1120, X1100

- Optional curb guards to protect the corners of 72" V-Plow Blade (V5291) from incidental curb damage

## 4 POINT K-CONNECT IMPLEMENTS

### 78" Straight Blade

V5294A\*

RTV-X, X1100, X1120, X1130, X1140

- 78" wide K-connect snow blade with 24" moldboard height and 0.075" moldboard thickness
- 68" plow width @ 30° max angle covers the width of the RTV-X
- Hydraulic lift with down pressure and float
- Hydraulic angle adjustment with two spring trip protection
- Reinforced with 4 vertical ribs, 2 diagonal ribs, and C-channels
- New curvature allows for rolling of snow eliminating the need for a deflector and includes markers and skid shoes standard
- Recommend optional Curb Guards (V5281)
- Requires 4 Point K-Connect (V5293) and Front Heavy Duty Strut Kit (K7591-99180) or Front Heavy Duty Spring Kit (K7591-99190)
- Compatible with PTO Drive K-Connect (V5299)



### 78" V-Blade

V5295A\*

RTV-X, X1100, X1120, X1130, X1140

- 78" wide K-connect V-blade (straight) with moldboard height 20" @ center, 25 3/4" @ ends, and 0.075" moldboard thickness
- 69 1/2" V position width and 66" scoop position width
- Hydraulic lift with down pressure and float
- Hydraulic angle adjustment with built-in relief valves to protect against impact
- Trip cutting edges
- Reinforced with 3 vertical ribs, 1 diagonal ribs, and C-channel on each wing
- New curvature allows for rolling of snow eliminating the need for a deflector and includes markers and skid shoes standard
- Recommend optional Curb Guards (V5281)
- Requires 4 Point K-Connect (V5293) and Front Heavy Duty Strut Kit (K7591-99180) or Front Heavy Duty Spring Kit (K7591-99190)
- Compatible with PTO Drive K-Connect (V5299)





## 4 POINT K-CONNECT MOUNTING SYSTEM & ATTACHMENTS

### 4 Point K-Connect

V5293A\*

RTV-X, X1100, X1120,  
X1130, X1140

- 4 point quick hitch system with a power unit to provide an independent 3 function hydraulic system
- Used to quick attach 78" Straight Blade (V5294A) or 78" V-Blade (V5295A)



### 4 Point Upgrade Kit

V5298\*

RTV-X, X1100, X1120,  
X1130, X1140

- Add a brush bar and 2 rectangular LED worklights to the 4 Point K-Connect (V5293)
- Requires 4 Point K-Connect (V5293)



### Front Guard Adapter Kit

77700-V5278 (V5278)

RTV-X, X1100, X1120, X1130, X1140

- Optional front guard adapter for 4 Point K-Connect (V5293) to reinstall front guard when front K-Connect implements are put away for the season

### Rubber Cutting Edge

V5287\*

RTV-X, X1100, X1120, X1130 X1140

- Optional rubber cutting edge for 78" Straight Blade (V5294A)

### Plastic Cutting Edge

V5288\*

RTV-X, X1100, X1120, X1130 X1140

- Optional plastic cutting edge for 78" Straight Blade (V5294A)

### Plastic Cutting Edge

V5284\*

RTV-X, X1100, X1120, X1130 X1140

- Optional plastic cutting edge for 78" V-Blade (V5295A)

### Curb Guards

V5281\*

RTV-X, X1100, X1120, X1130 X1140

- Optional curb guards to protect the corners of 78" Straight Blade (V5294A) and 78" V-Blade (V5295A) from incidental curb damage

### Skid Shoes

V5285\*

RTV-X, X1100, X1120, X1130 X1140

- Replacement skid shoes for 78" Straight Blade (V5294A) and 78" V-Blade (V5295A)

**PTO DRIVE K-CONNECT IMPLEMENTS**

**66" Rotary Broom**

V5266\*

RTV-X, X1100, X1120

- 66" wide PTO driven rotary broom with 24" diameter poly brushes
- 59 1/2" width @ 25° max angle
- Hydraulic lift and angle adjustment with 8 1/2 degree oscillation
- Floating wheels and markers standard
- Requires 4 Point K-Connect (V5293), PTO Drive K-Connect (V5299), and Front Heavy Duty Strut Kit (K7591-99180) or Front Heavy Duty Spring Kit (K7591-99190)



**66" Commercial Snowblower**

V5296\*

RTV-X, X1100, X1120

- 66" wide PTO driven 2-stage commercial snowblower with hydraulic chute rotation and deflection
- 16" fan with 4 blades
- Skid shoes and drift cutters are standard
- Requires 4 Point K-Connect (V5293), PTO Drive K-Connect (V5299), and Front Heavy Duty Strut Kit (K7591-99180) or Front Heavy Duty Spring Kit (K7591-99190)



**Debris Blower**

V5279

RTV-X, X1100, X1120

- The perfect addition to your X-Series, makes clean up and debris removal a breeze
- Generates over 214 mph of velocity, with 225° of hydraulically driven nozzle rotation with a standard parking stand included
- Estimated 30-minute installation time, so you can swap out snow removal implements and prepare for warmer weather quickly
- Requires 4 Point Hitch (V5293B), PTO Kit (V5299B), and Hand Throttle Kit (V5245)
- NOT compatible with 4 Point Hitch (V5293A & V5293) and PTO Kit (V5299A & V5299)



**PTO DRIVE K-CONNECT MOUNTING SYSTEM & ATTACHMENT**

**PTO Drive K-Connect**

V5299B\*

RTV-X, X1100, X1120

- Used in conjunction with 4 Point K-Connect (V5293) to operate 66" Rotary Broom (V5266) or 66" Commercial Snowblower (V5296)
- For RTV-X1120, requires Water Pump Pulley (16241-74250) and Engine Fan Belt (1E270-97010)
- Requires 4 Point K-Connect (V5293)



**50/50 Poly & Steel Brush Kit**

V5269\*

RTV-X, X1100, X1120

- Optional 24" diameter 50/50 poly and steel brush kit for 66" Rotary Broom (V5266)

**Plastic Cutting Edge with Skid Shoes**

V5297\*

RTV-X, X1100, X1120

- Optional plastic cutting edge and skid shoes for 66" Commercial Snowblower (V5296)



# SPRAYERS

**NEW**

## **60 Gallon RTV Spot Sprayer**

**77700-12145**

- 60 PSI gauge
- 5.0 GPM demand pump
- RTV clamps
- Polyethylene tank with mould-in drain with cap
- 25' hose with spray gun
- Deluxe pistol grip handgun sprays up to 25' vertical and 35' horizontal
- Large 5" fill lid with tether
- 8' wiring harness with battery clips
- **Add a Boom - The 77700-09601**



**NEW**

## **40 Gallon RTV Sprayer with Hitch Mount Boom**

**77700-08964**

- Unique 2" receiver mount boom provides 300° of adjustability
- 7 nozzle breakaway boom coverage up to 140"
- Nozzles include check valve
- Chemically-resistant polyethylene tank
- 2.2 GPM pump
- 60 PSI gauge
- Deluxe 18" sprayer wand
- Adjustable relief with gauge



**NEW**

## **25 Gallon Sprayer**

**77700-08963**

- 3 nozzle boomless spray pattern allows for 140" (11.6') of coverage
- Chemically-resistant polyethylene tank
- 2.2 GPM pump
- 60 PSI gauge
- Deluxe 18" sprayer wand
- Adjustable relief with gauge
- Multi-purpose sprayer fits most RTV's, ATV's & UTV's



**NEW**

## **Sprayer Boom**

**77700-09601**

- Sprayer boom for Kubota 40 gallon sprayer
- Compatible with many other sprayers!



## Rock Salt Spreader

V5002-A\*

RTV-X, X900, X1100, X1120

- Ideal for winter applications with 3 cubic feet capacity (240 lbs) and spreading width up to 25 ft
- Electric powered motor and transmission controlled by a variable speed weatherproof controller
- Heavy duty poly hopper construction
- Top screen and fitted cover included



## Tailgate Spreader

V5003-A\*

RTV-X, X900, X1100, X1120

- Ideal for year round use with 3 cubic feet capacity (240 lbs) and spreading width up to 20 ft
- Easy-to-calibrate for various materials (e.g. seed, fertilizer, bagged ice melt, and more)
- Electric powered motor and transmission controlled by a variable speed weatherproof controller
- Heavy duty poly hopper construction
- Top screen and fitted cover included



## Cargo Box Spreader

V5005\*

RTV-X, X900,  
X1100, X1120

- 11 cubic feet capacity (800 lbs) and spreading width up to 30 ft
- Electric powered motor and transmission with a dual controller for independent material and spread width control
- Heavy duty poly hopper construction
- Top screen, fitted cover, and heavy duty vibrator included



## Flow Control Tube

V4407\*

RTV-X, X900, X1100, X1120

- Optional stainless adjustable flow regulator helps prevent leaking issues when handling fine pellet and flake materials
- Requires Cargo Box Spreader (V5005)



## 36" Drop Spreader

V5004\*

RTV-X, X900, X1100, X1120

- Ideal for precise snow and ice management applications
- 6 cubic foot (480 lb) material capacity and 36" drop pattern is perfect for sidewalk maintenance
- Electric powered motor and vibrator with cab mounted digital, variable speed controller
- Features a gateless design to help improve material efficiency and reduce turf damage
- Heavy duty poly hopper construction
- Top Screen and Molded Hopper Cover included





Spreading Materials	V5002-A	V5003-A	V5004	V5005
Bagged Rock Salt	X		X	X
Bagged Ice Melters		X	X	X (w/ V4407)
Calcium Chloride Pellets		X	X	X (w/ V4407)
Calcium Flakes		X	X	X (w/ V4407)
Bulk Salt			X	X
50/50 Sand Salt Mix			X	X
Granular Fertilizer & Turf Care Materials		X		X (w/ V4407)





## HDWS Tire & Wheel Assembly

K7591-19312 (ARTV5203)  
X900, X1120, X1100, X1140

- Includes 1 OEM tire and steel wheel
- 25x10-12 6 ply tire
- HDWS tread design are non-directional



## ATV Tire & Wheel Assembly

**Left** K7591-19112  
(ARTV5201L)

**Right** K7591-19162  
(ARTV5201R)

X900, X1120, X1100, X1140

- Includes 1 OEM tire and steel wheel
- 25x10-12 6 ply tire
- ATV tread design are directional (left or right)



## TURF Tire & Wheel Assembly

K7591-19613 (ARTV5205)  
X900, X1120, X1100

- Includes 1 OEM tire and steel wheel
- 25x12-12 6 ply tire
- TURF tread design are non-directional



## Tire & Alloy Wheel Assembly

**Black ATV Left** K7591-99850 (ARTV5212L)

**Black ATV Right** K7591-99860 (ARTV5212R)

**Black HDWS** K7591-99800 (ARTV5214)

**Silver ATV Left** K7591-99830 (ARTV5211L)

**Silver ATV Right** K7591-99840 (ARTV5211R)

**Silver HDWS** K7591-99790 (ARTV5213)

X900, X1120, X1100, X1140

- Includes 1 OEM tire and alloy wheel
- 25x10-12 6-ply tire
- ATV tread design are directional (left or right)
- HDWS tread design are non-directional
- Requires Alloy Wheel Hardware Kit (black - K7591-99140) or (silver - K7591-99170)



**NEW**

## HDMP Tire Assembly

**Alloy Wheel Assy** K7121-19820

**Steel Wheel Assy** K7121-19300

RTV-X

- More aggressive tread design for off-road applications
- Designed for longer-lasting wear, especially for paved road conditions



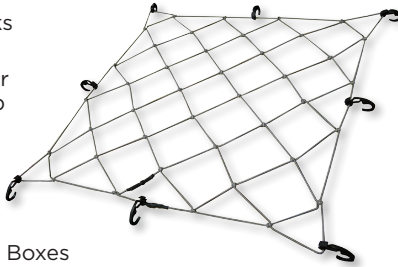


# RTV ACCESSORIES

## Cargo Net

77700-08978

- 34" x 34" — stretches to 60" x 60"
- Heavy duty plastic hooks prevent scratching
- Finger holes in hooks for safety and easy hook up
- Weather resistant
- Secures odd, bulky shapes
- Adjustable hooks
- Fits most UTV/RTV Bed Boxes



## RTV Tow Strap

77700-08977

- 1-1/4" X 12' tow strap with loops and shackle
- 5,000 lbs. break strength
- Forged shackle
- Reinforced attachment loops



## ShockStrap® Load-Absorbing Ratchet Straps

9' x 2" 77700-10680

18' x 2" 77700-10681

- Dependable - a ShockStrap® provides superior shock absorption without coming loose—keeps tension on the strap
- Safety Strap - a backup strap in case the ShockStrap® is compromised
- Durable - made from our proprietary formula that is not affected by most chemicals, sunlight, oil, salt water, fungus or moisture
- Rust Resistant - hooks and buckle are yellow zinc coated, which lasts 8 to 10 times longer than chrome plating
- Soft Loop - flexibility to always find a way to secure your load



## Fire Extinguisher Mount

77700-10709

- Secures fire extinguishers up to 3.5" in diameter
- Universal design mounts to round tube roll cages up to 2.25"
- Patented low-profile mounting
- Adjustable clamps secure most fire extinguishers
- Fire extinguisher not included



## Work Gear Bag

77700-10694

- Made from heavy duty, ballistic nylon
- Easily and quickly attaches to your Kubota RTV
- Includes strap kit to attach to your RopsRackPack® and buckles for attaching to your Ultimate Rack
- Gear Bag is 18" long x 4" wide x 11" tall



## Portable Water-Resistant Bluetooth Speaker & Mounting Clamps

77700-12846

- Dynamic 20W portable speaker to take the music with you
- Powerful 57mm driver for high definition sound clarities
- Built-in equalizer allows mode adjustment for better sound output
- Built-in microphone to receive phone calls
- Durable construction, impact-proof & water-resistant ABS body with rubber coating & IPX6 rating
- Durable nylon composite clamps keep speaker secure
- Designed for fast and easy attachment/removal
- Clamps fit roll bars 1.625" to 2" diameter





# KEEP IT GENUINE. KEEP IT **KUBOTA!**

**ARE YOU MARKETING FOR KUBOTA GENUINE PARTS?**



**Kubota Parts and Service**  
**Reliability > for the Job Ahead**

